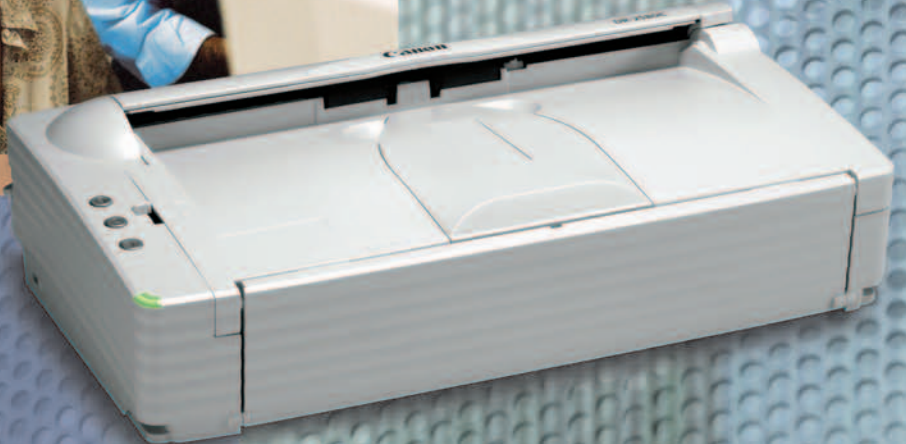


# Canon

## DR-2580C



IMAGE FILING  
SYSTEMS



# DR-2580C

## IMAGE FILING SYSTEMS

### COMPACT, PORTABLE POWER

Canon is known throughout the world for its ability to transform the latest technology into practical applications. The DR-2580C color scanner is no exception. It accommodates a wide range of source materials, including plastic cards. This powerful scanner is both compact and portable, so you can put it on your desktop, or take it on the road.

#### A Desktop Scanner That Handles It All

The DR-2580C is built to boost productivity—it's capable of scanning at a rapid rate of up to 25 pages or 50 images per minute.\* With Quick Start Scanning, the DR-2580C is ready when you are. No warm-up time is necessary—just power on and begin scanning in black and white, grayscale, or color.

For maximum flexibility, the DR-2580C offers two feeding mechanisms: a U-Turn Path and a new Straight Path with a Floating Sensor unit. To scan thick documents or plastic cards, such as insurance cards or drivers' licenses, just raise the Eject Selection Lever and send the card through the paper feeder. To scan multiple sheets, use the scanner's Automatic Document Feeder, which holds up to 50 sheets and makes batch scanning a one-step process. The DR-2580C can easily handle large documents up to 11" x 14", or 11" x 17" in Folio mode. Scan books or fragile documents with the same simplicity—just add the optional, user-installable Flatbed Scanner unit.



\* Examples based on typical settings, rated in pages/images per minute with letter-sized documents at 200 dpi unless otherwise specified. Actual processing speeds may vary based on PC performance and application software.



### Loaded with Powerful Image Processing Software

The DR-2580C arrives bundled with CapturePerfect® 3.0 and Adobe® Acrobat® 7.0, so it's ready to use right out of the box. Plus, it's packed with new, intuitive features that put you in control of the image capture process.

CapturePerfect is a robust, out-of-the-box document imaging application that maximizes the performance of DR-Series Scanners. The DR-2580C comes with an updated version of the software, so you can scan, view, save, distribute, and print office documents more easily than ever before. CapturePerfect is compatible with every feature on the DR-2580C and offers a number of post-scan image editing functions. Equally important, it provides different ways to scan documents, and you can save files in a variety of formats, including TIFF, BMP, JPEG, and searchable PDF. The software also offers a number of more powerful features such as full-text OCR, encrypted PDF file creation, and file name indexing capabilities.

### Advanced Scanning Technology in a Small Package

The DR-2580C is not only one of the smallest, but also one of the most easy-to-use scanners in its class. You can enjoy one-touch scanning by simply assigning your most common functions to its customizable Scan-To Job buttons. You'll be able to enhance black-and-white scans with the Contrast Adjustment feature that sharpens images and makes text more distinctive on low-contrast documents. And you'll consistently capture high-quality scans because a built-in shading board automatically adjusts shading prior to each and every scan job.

The DR-2580C also includes the new Rapid Recovery System, which sends only completed image data to your application software, offering seamless scanning operation should a feeding error occur. And the Punch Hole Removal function removes the black dots that appear when you scan pages from booklets or binders.

### From the Leader in Imaging Technology

Compact, powerful, and fast. The DR-2580C is a versatile scanner designed to meet the diverse imaging needs of your busy office. This innovative machine offers you the most advanced features in document scanning. Better yet, it comes bundled with the latest version of CapturePerfect and Adobe Acrobat, so it's easy to use right out of the box. Most important, it's from Canon, the brand the world relies on for the latest solutions in imaging technology.

DR-2580C with optional Flatbed Scanner



# DR-2580C

## DR-2580C Specifications

Type: Compact Color Document Scanner  
Item Number: 0080B002AA  
Document-feeding: Automatic or Manual  
Document Size  
Width: 2.1" - 8.5"  
Length: 2.8" - 14"  
Weight  
U-Turn path  
Automatic-feeding: 14-32 lb. Bond  
Manual-feeding: 11-40 lb. Bond  
Straight path  
Automatic-feeding: 11-40 lb. Bond  
Manual-feeding: 11-40 lb. Bond  
Feeder/Stacker Capacity: 50 Sheets  
Grayscale: 8-bit  
Color: 24-bit  
Scanning Element: Contact Image Sensor (CMOS)  
Light Source: RGB LED

Scanning Modes: Simplex, Duplex, Color, Grayscale, Black and White, Advanced Text Enhancement, Error Diffusion  
Dropout Color: RGB  
Optical Resolution: 600 dpi  
Output Resolution: 100/150/200/240/300/400/600 dpi  
Scanning Speeds\*  
(LTR Portrait @ 200 dpi) Simplex Duplex  
Black and White: 25 ppm 50 ipm  
Grayscale: 25 ppm 50 ipm  
Color: 13 ppm 18 ipm  
Color 150 dpi: 17 ppm 32 ipm  
Interface: USB 2.0  
Scanner Drivers: For Windows® 98/2000/Me/XP  
Bundled Software: CapturePerfect 3.0 and Adobe Acrobat 7.0 Standard  
Dimensions (H x W x D): 3.2" x 12.0" x 6.6"

Weight: 4.2 lb.  
Power Consumption: 85W or Less  
(Energy Saving Mode: 6W or Less)  
Daily Duty Cycle: Approx. 700 Scans  
Options: Flatbed Unit (0106B001AA)  
Barcode Module (0434B003AA)  
Exchange Roller Kit (0106B002AA)  
Carrying Case

\* Examples based on typical settings, rated in pages/images per minute with letter-sized documents at 200 dpi unless otherwise specified. Actual processing speeds may vary based on PC performance and application software.

**NOTE:** The DR-2580C has been tested for compatibility with many of the industry's leading document management solution providers. Please visit the scanner's product page on Canon U.S.A.'s Web site at [www.usa.canon.com](http://www.usa.canon.com) for a comprehensive compatibility listing.

© 2005 Canon U.S.A., Inc. All rights reserved.

As an ENERGY STAR® Partner, Canon U.S.A., Inc. has determined that this product meets the ENERGY STAR® guidelines for energy efficiency. ENERGY STAR and the ENERGY STAR certification mark are registered U.S. marks. ISIS is a registered trademark of Captiva Software Corporation. Adobe, the Adobe logo, and Acrobat are registered trademarks of Adobe Systems Incorporated in the United States and/or other countries. Windows is a registered trademark of Microsoft Corporation in the United States and/or other countries. CapturePerfect is a registered trademark of Canon Electronics Inc. Canon and Canon Know How are registered trademarks of Canon Inc. in the United States and may also be registered trademarks or trademarks in other countries. IMAGEANYWARE is a service mark of Canon U.S.A., Inc. in the United States. All referenced product names and other marks are trademarks of their respective owners.

All specifications are subject to change without notice.

**Canon** KNOW HOW®

1-800-OK-CANON  
[www.usa.canon.com](http://www.usa.canon.com)

Canon U.S.A., Inc.  
One Canon Plaza  
Lake Success, NY 11042

0053W172

0505-2580C-20M-LSP



PRINTED ON RECYCLED  
PAPER IN THE U.S.A.

**Capture Perfect**

